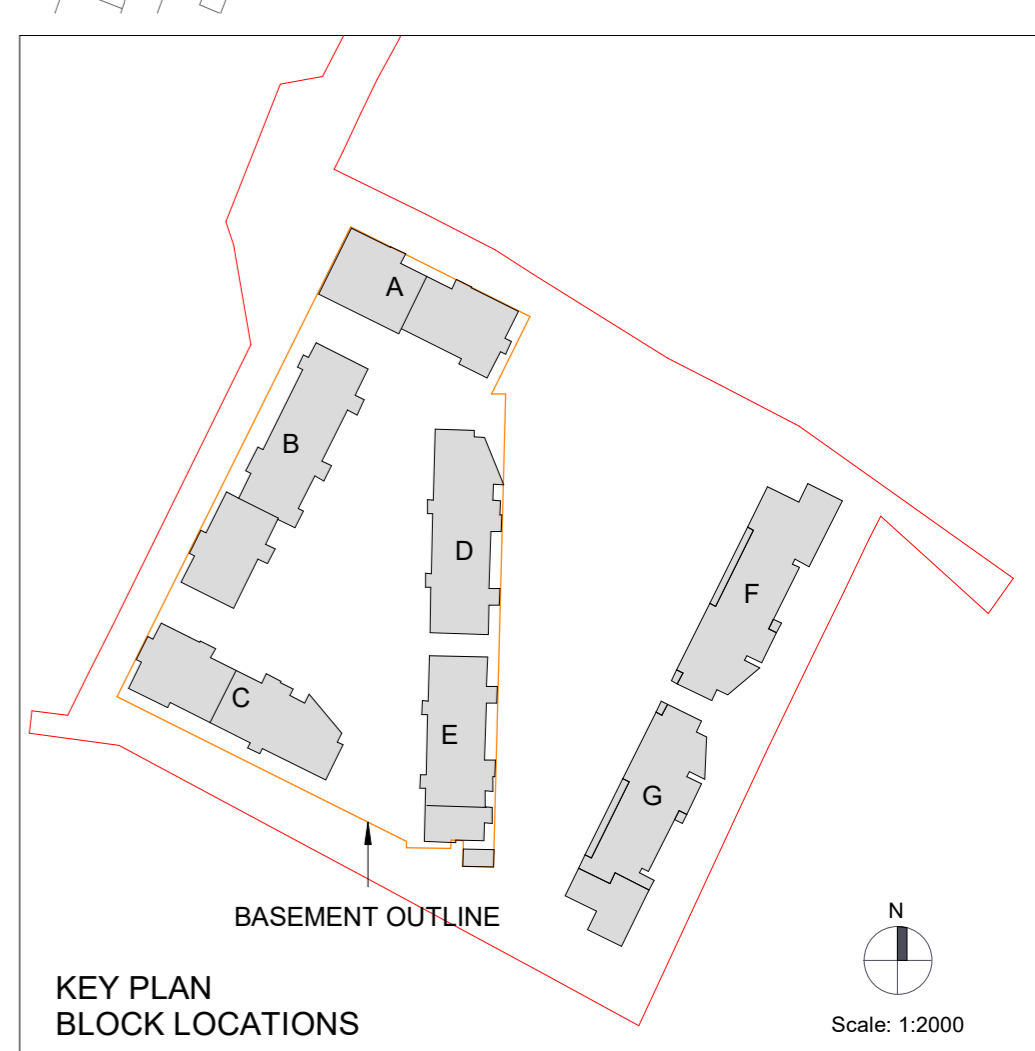
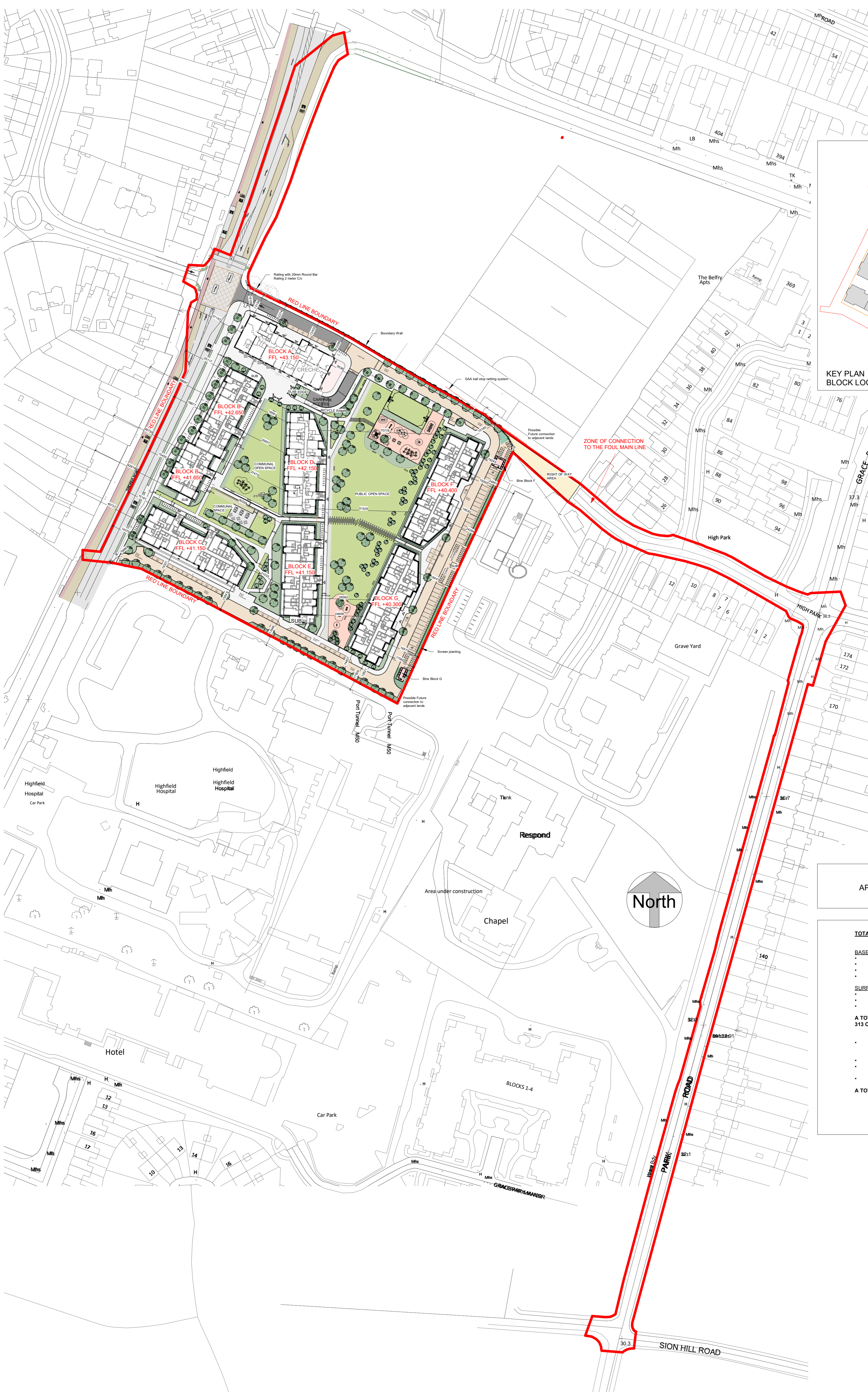


DESIGN INTENT DRAWING



APPLICATION BOUNDARY

TOTAL PROPOSED CAR PARKING SPACES

LEVEL	TYPE	NUMBER
BASEMENT	RESIDENTS PARKING (5 of them are for electric vehicles)	no. 249
	CRECHE STAFF	no. 5
	ACCESSIBLE PARKING	no. 18
	CAR SHARE / CAR CLUB	no. 5
SURFACE LEVEL	RESIDENTS PARKING	no. 37
	ACCESSIBLE PARKING	no. 4
	VISITORS PARKING (5 of them are drop-off parking)	no. 19
A TOTAL OF 337 CAR PARKING SPACES PROVIDED		
313 OF WHICH FOR RESIDENTS		
	MOTORCYCLE PARKING	no. 14
	SECURE CYCLE SPACES	no. 732
	VISITOR CYCLE SPACES	no. 236
	CARGO BIKE SPACES	no. 14
A TOTAL OF 982 CYCLE SPACES PROVIDED		

Rev	Date	Description	Issued By

Project Stage: **PLANNING**

Client: Eastwise Construction Swords Limited

Project: Hartfield Place
Swords Road, Whitehall, Dublin 9
D09 C7F8

Drawing Title: **SITE PLAN**

Drawn	Checked	Paper Size	Scale	Date
DP	CM	A1	As indicated	Mar. 2022

Project No: HARTPL
Drawing No: 000508
Classification:
Revision:
File Name: HARTPL-CWO-SM-00-DR-A-000508

Status: **S2-Suitable For Information**